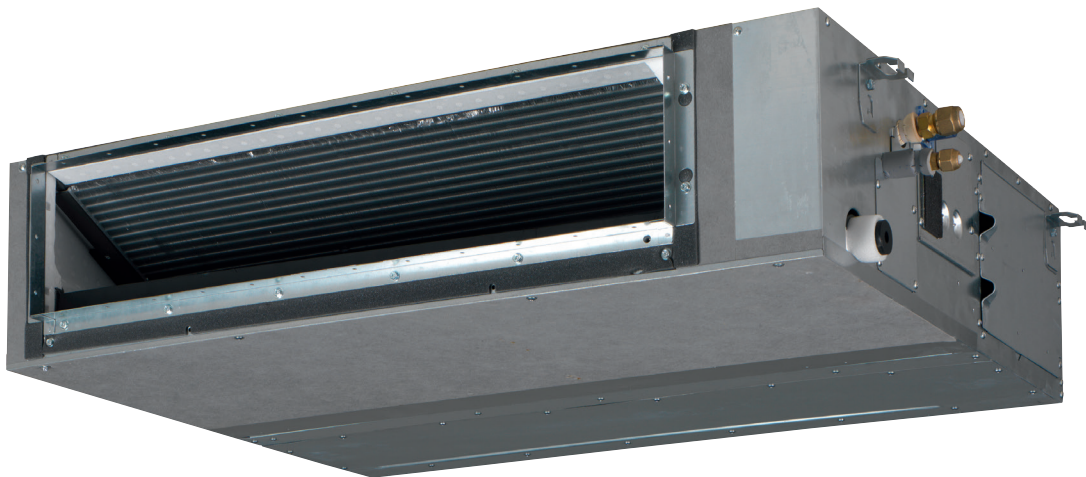




Concealed ceiling unit  
with medium ESP  
Air Conditioning  
Technical Data  
FBA-A(9)





# Table of contents

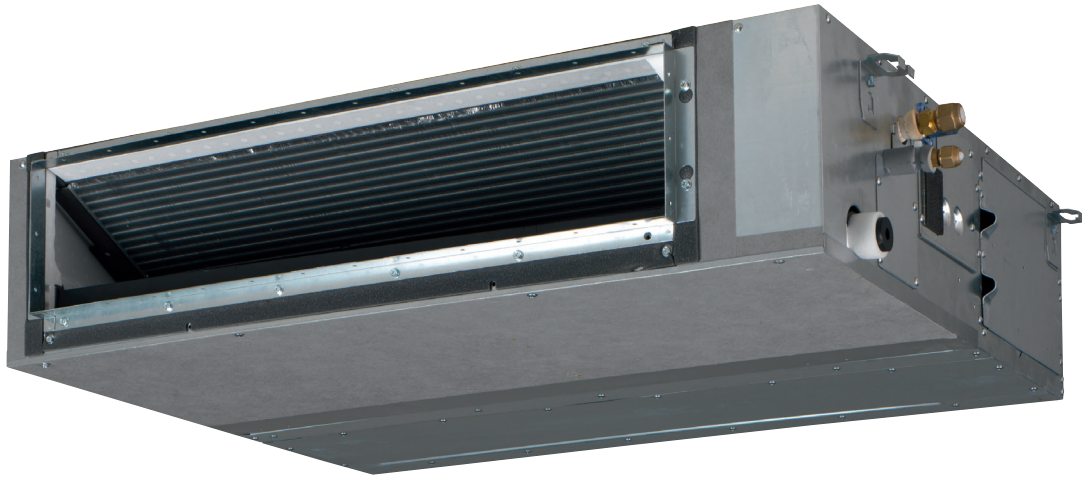
## FBA-A(9)

<b>1</b>	<b>Features</b>	<b>4</b>
	FBA-A(9)	4
<b>2</b>	<b>Specifications</b>	<b>5</b>
<b>3</b>	<b>Safety device settings</b>	<b>7</b>
	Safety Device Settings	7
<b>4</b>	<b>Options</b>	<b>8</b>
	Options	8
<b>5</b>	<b>Dimensional drawings</b>	<b>9</b>
	Dimensional Drawings	9
<b>6</b>	<b>Centre of gravity</b>	<b>12</b>
	Centre of Gravity	12
<b>7</b>	<b>Piping diagrams</b>	<b>13</b>
	Piping Diagrams	13
<b>8</b>	<b>Wiring diagrams</b>	<b>14</b>
	Wiring Diagrams - Three Phase	14
<b>9</b>	<b>Sound data</b>	<b>15</b>
	Sound Power Spectrum	15
	Sound Pressure Spectrum	17
<b>10</b>	<b>Fan characteristics</b>	<b>20</b>
	Fan Characteristics	20
<b>11</b>	<b>Installation</b>	<b>22</b>
	Installation Method	22

# 1 Features

## 1 - 1 FBA-A(9)

- › Slimmest unit in class, only 245mm (300mm built-in height) and therefore narrow ceiling voids are no longer a challenge
- › Low operation sound level down to 25dBA
- › Medium external static pressure up to 150Pa facilitates using flexible ducts of varying lengths
- › Unified indoor unit range for R-32 and R-410A
- › Combining with R-32 Bluevolution technology, reduces environmental impact with 68% compared to R-410A, leads directly to lower energy consumption thanks to its high energy efficiency and has up to lower 16% refrigerant charge
- › Possibility to change ESP via wired remote control allows optimisation of the supply air volume
- › Discretely concealed in the ceiling: only the suction and discharge grilles are visible
- › Multi zoning kit allows multiple individually-controlled climate zones to be served by one indoor unit
- › Reduced energy consumption thanks to specially developed DC fan motor
- › Optional fresh air intake
- › Flexible installation: air suction direction can be altered from rear to bottom suction and choice between free use or connection to optional suction grilles
- › Standard built-in drain pump with 625mm lift increases flexibility and installation speed



- |                         |                         |                      |                     |                                 |               |                 |                |                                     |
|-------------------------|-------------------------|----------------------|---------------------|---------------------------------|---------------|-----------------|----------------|-------------------------------------|
|                         |                         |                      |                     |                                 |               |                 |                |                                     |
| Infrastructure cooling  | Multi zoning            | Home leave operation | Fan only            | Auto cooling-heating changeover | Whisper quiet | Fan speed steps | Dry programme  | Air filter                          |
|                         |                         |                      |                     |                                 |               |                 |                |                                     |
| Weekly timer            | Infrared remote control | Wired remote control | Centralised control | Online controller via app       | Auto-restart  | Self diagnosis  | Drain pump kit | Twin/triple/double twin application |
|                         |                         |                      |                     |                                 |               |                 |                |                                     |
| Multi model application |                         |                      |                     |                                 |               |                 |                |                                     |

## 2 Specifications

### 1 - 1 FBA-A(9)

Technical Specifications				FBA35A9	FBA50A9	FBA60A9	FBA71A9	FBA100A	FBA125A
Cooling capacity	Sensible capacity	Nom.	kW						9.06
	Latent capacity	Nom.	kW						4.94
	Total capacity	Nom.	kW						14.00
Heating capacity	Total capacity	Nom.	kW						13.5
Power input - 50Hz	Cooling	Nom.	kW						0.23
	Heating	Nom.	kW						0.23
Casing	Colour	Not painted (galvanised)							
	Material	Galvanised steel plate							
Dimensions	Unit	Height	mm	245					
		Width	mm	700	1,000		1,400		
		Depth	mm	800					
	Packed unit	Height	mm	890					
		Width	mm	900	1,200		1,600		
	Depth	mm	295						
Weight	Unit		kg	28.0	35.0		46.0		
	Packed unit		kg	30.5	38.0		49.0		
Heat exchanger	Fin	Type	Cross fin coil (Multi slit fins with hydrophilic treatment and Ø5Hi-XA tubes)						
Fan	Model	QD16A1CM/QD16A1DM							
	Type	Sirocco fan							
	Quantity			1	2		3		
Air flow rate	Cooling	High	m <sup>3</sup> /min	15.0	18.0		29.0	34.0	
		Medium	m <sup>3</sup> /min	12.5	15.0		26.0	29.0	
		Low	m <sup>3</sup> /min	10.5	12.5		23.0	23.5	
	Heating	High	m <sup>3</sup> /min	15.0	18.0		29.0	34.0	
		Medium	m <sup>3</sup> /min	12.5	15.0		26.0	29.0	
		Low	m <sup>3</sup> /min	10.5	12.5		23.0	23.5	
External static pressure	High	Pa	150						
	Nom.	Pa	30		40		50		
Fan motor	Quantity	1							
	Model	Brushless DC motor							
	Speed	Steps	3						
	Output	Rated	W	130	230		300		
Sound power level	Cooling		dBA	60.0	56.0		58.0	62.0	
Sound pressure level	Cooling	High	dBA	35.0	30.0		34.0	37.0	
		Medium	dBA	32.0	28.0		32.0	35.0	
		Low	dBA	29.0	25.0		30.0	32.0	
	Heating	High	dBA	37.0	31.0		36.0	38.0	
		Medium	dBA	34.0	28.0		33.0	35.0	
		Low	dBA	29.0	25.0		30.0	32.0	
Refrigerant	Type	R-32 / R-410A							
Piping connections	Sound absorbing insulation	Butyl Rubber							
	Liquid	Type	Flare connection						
		OD	mm	6,35		9,52			
Gas	Type	Flare connection							
	OD	mm	9,52	12,70		15,90			
Piping connections	Drain	VP20 (I.D. 20/O.D. 26)							
	Heat insulation	Foamed polystyrene / Foamed polyethylene							
Drain-up height		mm	625						
Air filter	Type	Resin net							
Control systems	Infrared remote control	BRC4C65 / BRC4C66							
	Wired remote control	BRC1D528 / BRC1E53A7 / BRC1E53B7 / BRC1E53C7							

Technical Specifications				FBA140A					
Cooling capacity	Sensible capacity	Nom.	kW	9.98					
	Latent capacity	Nom.	kW	5.42					
	Total capacity	Nom.	kW	15.40					
Heating capacity	Total capacity	Nom.	kW	15.5					
Power input - 50Hz	Cooling	Nom.	kW	0.23					
	Heating	Nom.	kW	0.23					
Casing	Colour	Not painted (galvanised)							
	Material	Galvanised steel plate							

## 2 Specifications

### 1 - 1 FBA-A(9)

2

Technical Specifications				FBA140A	
Dimensions	Unit	Height	mm	245	
		Width	mm	1,400	
		Depth	mm	800	
	Packed unit	Height	mm	890	
		Width	mm	1,600	
		Depth	mm	295	
Weight	Unit		kg	46.0	
	Packed unit		kg	49.0	
Heat exchanger	Fin	Type		Cross fin coil (Multi slit fins with hydrophilic treatment and Ø5HI-XA tubes)	
Fan	Model			QD16A1CM/QD16A1DM	
	Type			Sirocco fan	
	Quantity			3	
	Air flow rate	Cooling	High	m <sup>3</sup> /min	34.0
			Medium	m <sup>3</sup> /min	29.0
			Low	m <sup>3</sup> /min	23.5
		Heating	High	m <sup>3</sup> /min	34.0
			Medium	m <sup>3</sup> /min	29.0
			Low	m <sup>3</sup> /min	23.5
	External static pressure	High	Pa		150
Nom.		Pa		50	
Fan motor	Quantity			1	
	Model			Brushless DC motor	
	Speed	Steps		3	
	Output	Rated	W	300	
Sound power level	Cooling			62.0	
Sound pressure level	Cooling	High	dB(A)	37.0	
		Medium	dB(A)	35.0	
		Low	dB(A)	32.0	
	Heating	High	dB(A)	38.0	
		Medium	dB(A)	35.0	
		Low	dB(A)	32.0	
Refrigerant	Type			R-32 / R-410A	
Piping connections	Sound absorbing insulation			Butyl Rubber	
	Liquid	Type		Flare connection	
		OD	mm		9.52
	Gas	Type		Flare connection	
OD		mm		15.90	
Piping connections	Drain			VP20 (I.D. 20/O.D. 26)	
	Heat insulation			Foamed polystyrene / Foamed polyethylene	
Drain-up height		mm		625	
Air filter	Type			Resin net	
Control systems	Infrared remote control			BRC4C65 / BRC4C66	
	Wired remote control			BRC1D528 / BRC1E53A7 / BRC1E53B7 / BRC1E53C7	

Standard accessories: Operation manual; Quantity: 1;

Standard accessories: Installation manual; Quantity: 1;

Standard accessories: Drain hose; Quantity: 1;

Standard accessories: Metal clamp for drain hose; Quantity: 1;

Standard accessories: Washer for hanger bracket; Quantity: 8;

Standard accessories: Screws; Quantity: 40;

Standard accessories: Insulation for fitting; Quantity: 2;

Standard accessories: Sealing pads; Quantity: 5;

Standard accessories: Clamps; Quantity: 4;

Electrical Specifications		FBA35A9	FBA50A9	FBA60A9	FBA71A9	FBA100A	FBA125A
Power supply	Phase						1~
	Frequency	Hz					50/60
	Voltage	V					220-240/220

Electrical Specifications		FBA140A
Power supply	Phase	1~
	Frequency	50/60
	Voltage	220-240/220

The sound power level is an absolute value indicating the power which a sound source generates. |

See separate drawing for electrical data

### 3 Safety device settings

#### 3 - 1 Safety Device Settings

FBA35-71A9  
FBA100-140A

3

Safety devices		FBA35-71A2VEB(9)	FBA100-140A2VEB
PCB fuse		250V, 3.15A	250V, 3.15A
Fan motor thermal protector	Maximum	110°C	110°C
Drain pump fuse		---	---

4D110741

# 4 Options

## 4 - 1 Options

### FBA-A(9)

4

		SA			
		ADEA35A FBA35A(9) ADEA60A FBA50A(9)	ADEA60A FBA60A(9) ADEA71A FBA71A(9)	ADEA100A FBA100A ADEA125A FBA125A	FBA140A
Discharge	Option kit				
Air discharge adaptor for round ducts	KDAP25A56A	x			
	KDAP25A71A		x		
	KDAP25A140A			x	

		SA			
		ADEA35A FBA35A(9) ADEA60A FBA50A(9)	ADEA60A FBA60A(9) ADEA71A FBA71A(9)	ADEA100A FBA100A ADEA125A FBA125A	FBA140A
Operation control	Option kit				
Wired remote control	BRC1D528, BRC1H51(9)W/S/K, BRC1H81W/S	X	X	X	
	BRC1E53A7	X(*7)	X(*7)	X(*7)	
	BRC1E53B7	X(*8)	X(*8)	X(*8)	
	BRC1E53C7	X(*9,10)	X(*9,10)	X(*9,10)	
Central remote control	DCS302CA51	X	X	X	
Unified ON/OFF controller	DCS301BA51	X	X	X	
Intelligent touch controller	DCS601CS1	X	X	X	
Schedule timer	DST301BA51	X	X	X	
Adaptor for wiring (interlock for fresh air intake fan)	KRP1B54	X	X	X	
Wiring adaptor for electrical appendices	KRP4A52	X(*4)	X(*4)	X(*4)	
Wiring adaptor for electrical appendices	KRP4A51	X(*2,4)	X(*2,4)	X(*2,4)	
Optional PCB for external electric heaters, humidifiers and/or hour meters	EKRP1B2A	X(*1,2)	X(*1,2)	X(*1,2)	
Wireless remote control -H/P-	BRC4C65	X	X	X	
Wireless remote control -C/O-	BRC4C66	X	X	X	
Simplified remote control for hotel use	BRC2E52C7	X(*6,10)	X(*6,10)	X(*6,10)	
Remote control for hotel use	BRC3E52C7	X(*6,10)	X(*6,10)	X(*6,10)	
Remote sensor	KRCS01-4B	X	X	X	
Electrical box with earth terminal	KJB411A	X	X	X	
Installation box for adaptor PCB	KRP1BA101	X	X	X	
Digital input adaptor	BRP7A51	X(*3,5)	X(*3,5)	X(*3,5)	
iTouch Manager	DCM601A51	X	X	X	
Wi-Fi adaptor for smartphones	BRP069A81 (*11)	X	X	X	

- (\*1) Electric heaters and humidifiers are field-supplied. Do not install them inside the equipment (refer to installation manual -EKRP1B2A- ).
- (\*2) When installing electric heaters, an optional PCB for external electric heaters (-EKRP1B2-) is required for each indoor unit.
- (\*3) These options require mounting plate -KRP4A96-.
- (\*4) Maximally -2- optional PCBs can be mounted.
- (\*4) This option needs to be installed together with installation box -KRP1B101/KRP1BA101-.
- (\*5) Only possible in combination with remote control -BRC2/3E52C7, BRC1E53A/B/C7, BRC1H51(9)W/S/K, BRC1H81W/S-.
- (\*6) Included languages are:  
 Language pack -1-: English, German, French, Dutch, Spanish, Italian, and Portuguese.  
 With PC cable -EKPCAB3- in combination with the Updater PC software, you can additionally change the language to:  
 Language pack -2-: English, Bulgarian, Croatian, Czech, Hungarian, Romanian, and Slovenian.  
 Language pack -3-: English, Greek, Polish, Russian, Serbian, Slovak, and Turkish.
- (\*7) Included languages are: English, German, French, Italian, Spanish, Portuguese, and Dutch.
- (\*8) Included languages are: English, Czech, Croatian, Hungarian, Slovenian, Romanian, and Bulgarian.
- (\*9) Included languages are: English, Russian, Greek, Turkish, Polish, Albanian, and Slovak.
- (\*10) Language pack -3- of controller -BRC1E53C7- is different from that of controller -BRC2/3E52C7-.
- (\*11) Only possible in combination with wired or wireless remote control (e.g. -BRC1E\*, BRC1H\*, BRC7FA\*.)

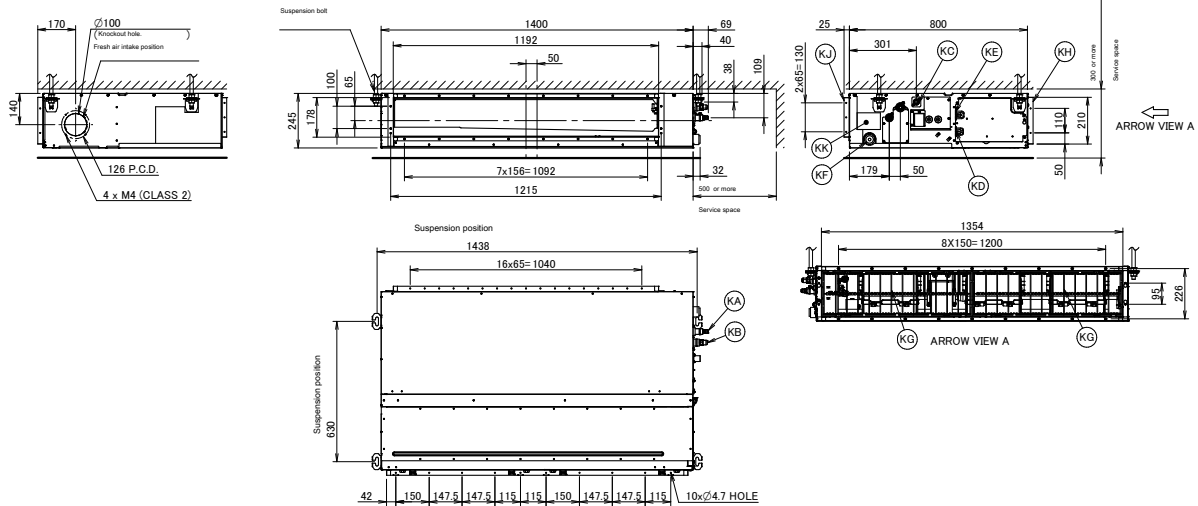
3D106133C



# 5 Dimensional drawings

## 5 - 1 Dimensional Drawings

FBA100-140A

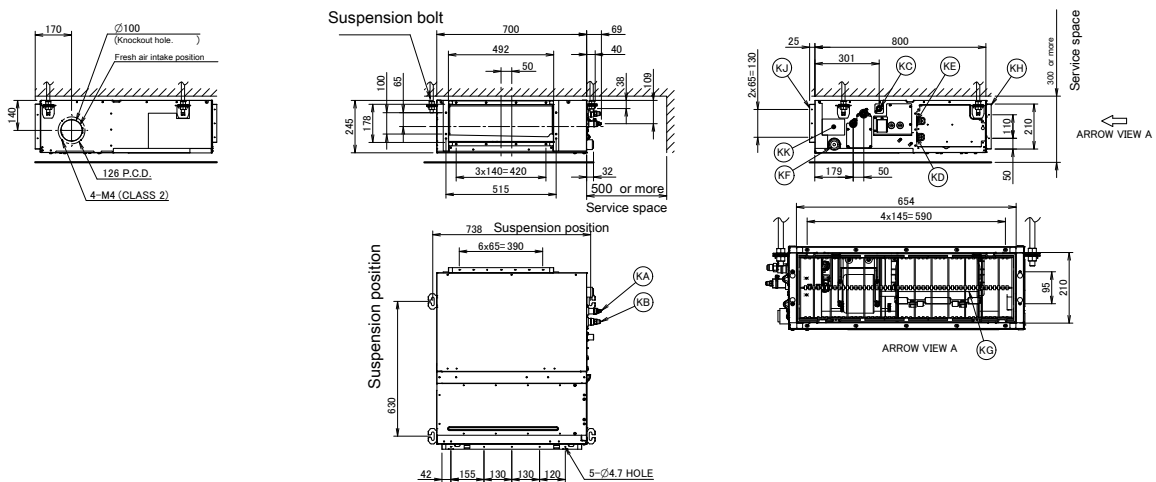


Item	Name	Description
KA	Liquid pipe connection port	∅9.52 flared connection
KB	Gas pipe connection port	∅15.90 flared connection
KC	Drain pipe connection	VP20 (OD 026, ID 020)
KD	Wiring connection	/
KE	Power supply connection	/
KF	Drain outlet	VP20 (OD 026, ID 020)
KG	Air filter	/
KH	Air suction side	/
KJ	Air discharge side	/
KK	Nameplate	/

Notes  
 1. When installing optional accessories, refer to their respective documentation.  
 2. The ceiling depth varies according to the documentation of the specific system.

3D094914B

FBA35A9



Item	Name	Description
KA	Liquid pipe connection port	∅6.35 flared connection
KB	Gas pipe connection port	∅9.52 flared connection
KC	Drain pipe connection	VP20 (OD 026, ID 020)
KD	Wiring connection	/
KE	Power supply connection	/
KF	Drain outlet	VP20 (OD 026, ID 020)
KG	Air filter	/
KH	Air suction side	/
KJ	Air discharge side	/
KK	Nameplate	/

Notes  
 1. When installing optional accessories, refer to their respective documentation.  
 2. The ceiling depth varies according to the documentation of the specific system.

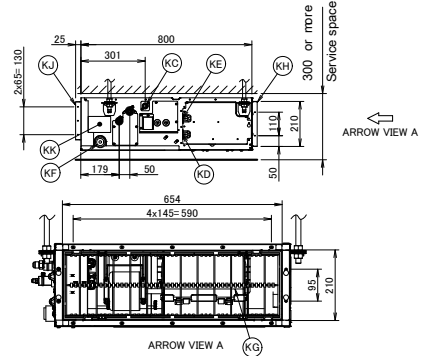
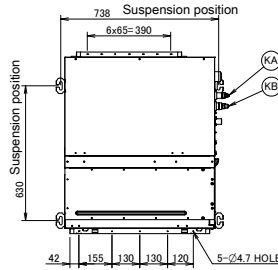
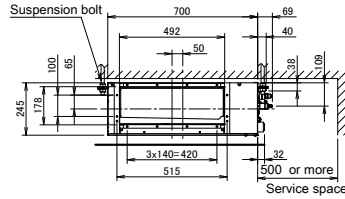
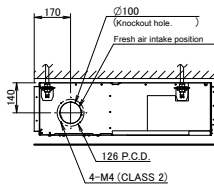
3D094988B

# 5 Dimensional drawings

## 5 - 1 Dimensional Drawings

5

### FBA50A9



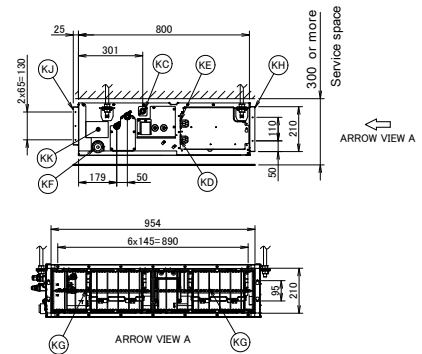
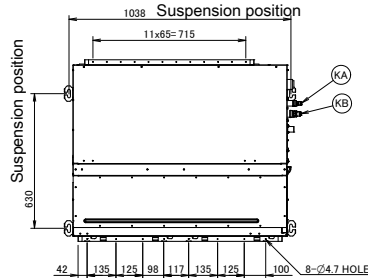
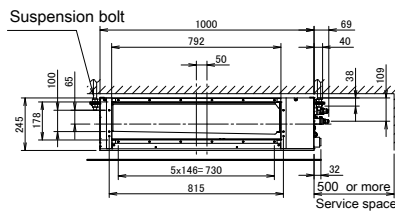
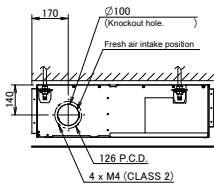
Item	Name	Description
KA	Liquid pipe connection port	Ø6.35 flared connection
KB	Gas pipe connection port	Ø12.70 flared connection
KC	Drain pipe connection	VP20 (OD Ø26, ID Ø20)
KD	Wiring connection	/
KE	Power supply connection	/
KF	Drain outlet	VP20 (OD Ø26, ID Ø20)
KG	Air filter	/
KH	Air suction side	/
KJ	Air discharge side	/
KK	Nameplate	/

Notes

- When installing optional accessories, refer to their respective documentation.
- The ceiling depth varies according to the documentation of the specific system.

3D094918B

### FBA60A9



Item	Name	Description
KA	Liquid pipe connection port	Ø6.35 flared connection
KB	Gas pipe connection port	Ø12.70 flared connection
KC	Drain pipe connection	VP20 (OD Ø26, ID Ø20)
KD	Wiring connection	/
KE	Power supply connection	/
KF	Drain outlet	VP20 (OD Ø26, ID Ø20)
KG	Air filter	/
KH	Air suction side	/
KJ	Air discharge side	/
KK	Nameplate	/

Notes

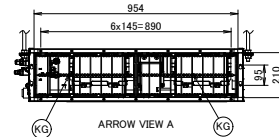
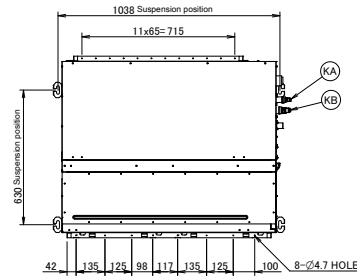
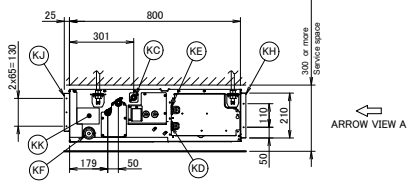
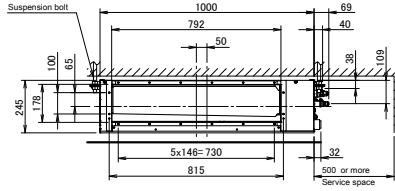
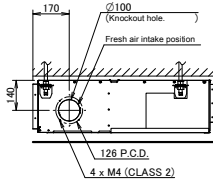
- When installing optional accessories, refer to their respective documentation.
- The ceiling depth varies according to the documentation of the specific system.

3D094983B

# 5 Dimensional drawings

## 5 - 1 Dimensional Drawings

### FBA71A9



Item	Name	Description
KA	Liquid pipe connection port	Ø9.52 flared connection
KB	Gas pipe connection port	Ø15.90 flared connection
KC	Drain pipe connection	VP20 (OD Ø26, ID Ø20)
KD	Wiring connection	/
KE	Power supply connection	/
KF	Drain outlet	VP20 (OD Ø26, ID Ø20)
KG	Air filter	/
KH	Air suction side	/
KJ	Air discharge side	/
KK	Nameplate	/

- Notes
- When installing optional accessories, refer to their respective documentation.
  - The ceiling depth varies according to the documentation of the specific system.

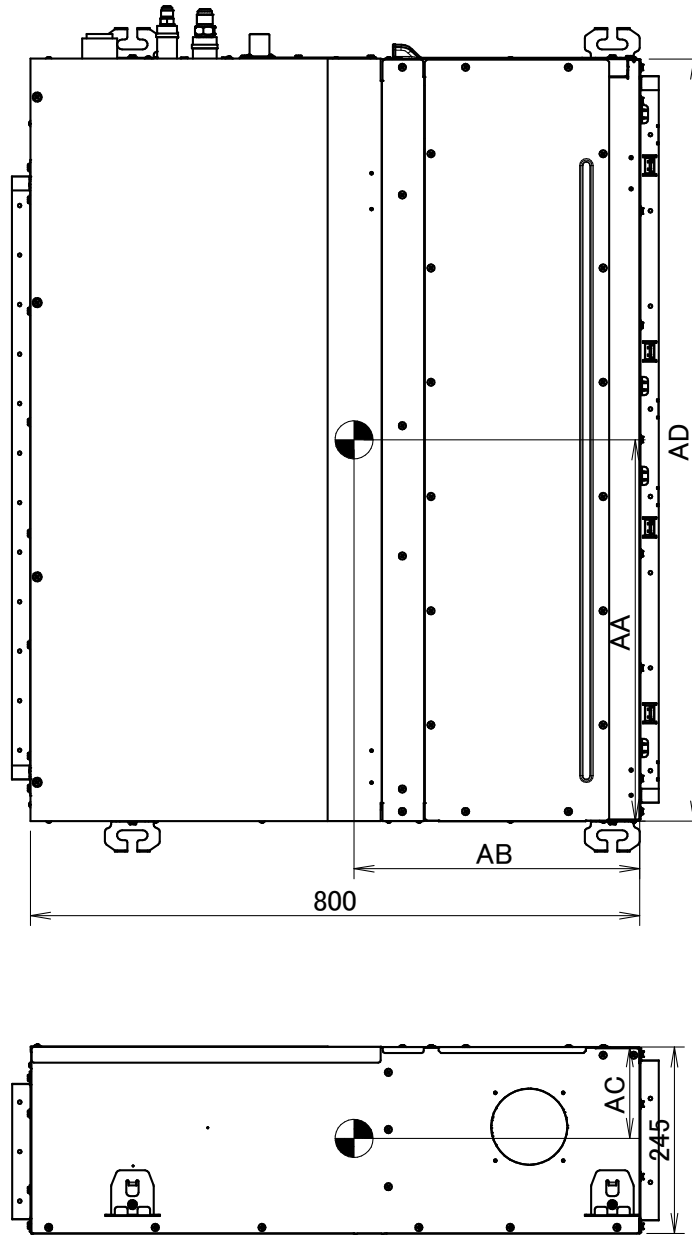
**3D094915B**

# 6 Centre of gravity

## 6 - 1 Centre of Gravity

6

FBA-A(9)



Applicable models	AA	AB	AC	AD
FBQ35/50, FBA35/50, ADEA35/50	410	375	125	700
FBQ60/71, ADEQ71, FBA60/71, ADEA60/71	525	380	125	1000
FBQ100/125/140, ADEQ100/125, FBA100/125/140, ADEA100/125	760	390	115	1400

4D093590C

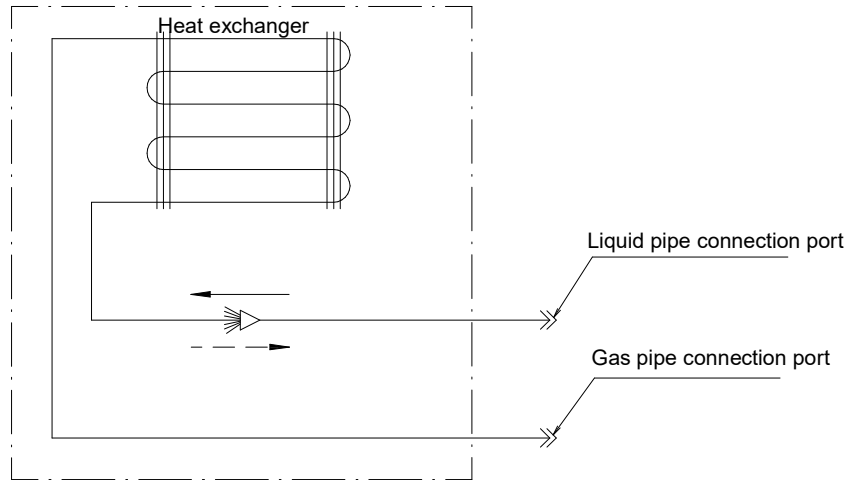
# 7 Piping diagrams

## 7 - 1 Piping Diagrams

FBA-A(9)

Piping connections Ø

Model	Gas	Liquid
FBQ35D2VEB	Ø 9.52	Ø 6.35
FBQ50D2VEB	Ø 12.70	Ø 6.35
FBQ60D2VEB	Ø 12.70	Ø 6.35
FBQ71D2VEB	Ø 15.90	Ø 9.52
FBQ100D2VEB	Ø 15.90	Ø 9.52
FBQ125D2VEB	Ø 15.90	Ø 9.52
FBQ140D2VEB	Ø 15.90	Ø 9.52
ADEQ71B2VEB	Ø 15.90	Ø 9.52
ADEQ100B2VEB	Ø 15.90	Ø 9.52
ADEQ125B2VEB	Ø 15.90	Ø 9.52
FBA35A2VEB (9)	Ø 9.52	Ø 6.35
FBA50A2VEB (9)	Ø 12.70	Ø 6.35
FBA60A2VEB (9)	Ø 12.70	Ø 6.35
FBA71A2VEB (9)	Ø 15.90	Ø 9.52
FBA100A2VEB	Ø 15.90	Ø 9.52
FBA125A2VEB	Ø 15.90	Ø 9.52
FBA140A2VEB	Ø 15.90	Ø 9.52
ADEA35A2VEB	Ø 9.52	Ø 6.35
ADEA50A2VEB	Ø 12.70	Ø 6.35
ADEA60A2VEB	Ø 12.70	Ø 6.35
ADEA71A2VEB	Ø 15.90	Ø 9.52
ADEA100A2VEB	Ø 15.90	Ø 9.52
ADEA125A2VEB	Ø 15.90	Ø 9.52



Refrigerant flow  
 Cooling →  
 Heating ←

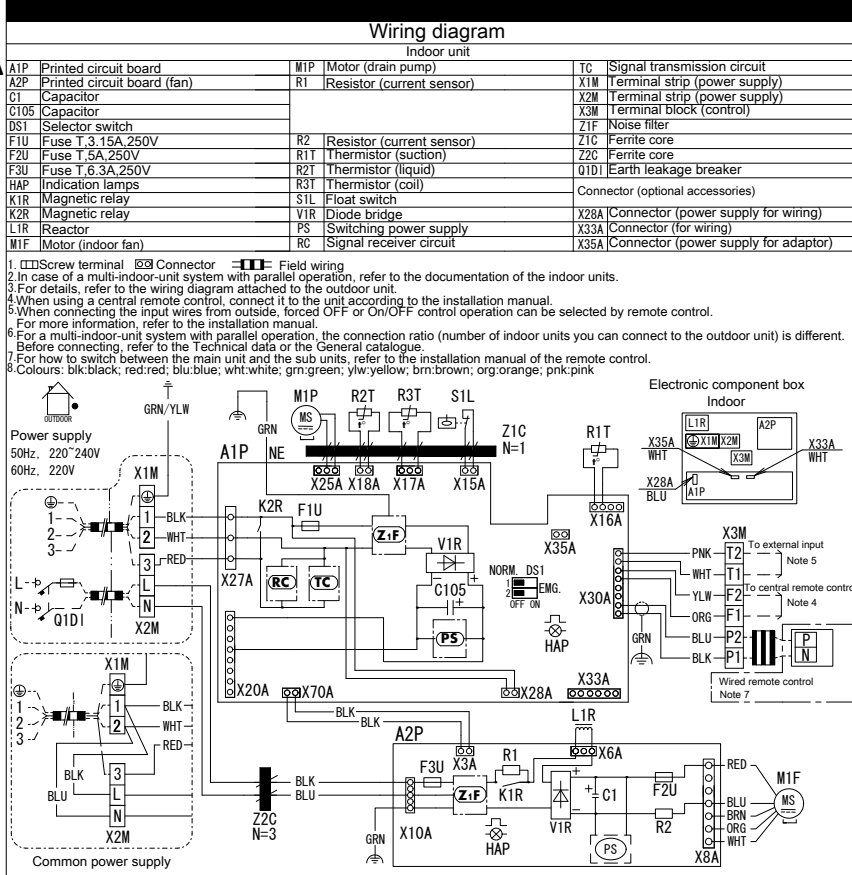
3D090271D

# 8 Wiring diagrams

## 8 - 1 Wiring Diagrams - Three Phase

8

### FBA35-71A9 FBA100-140A



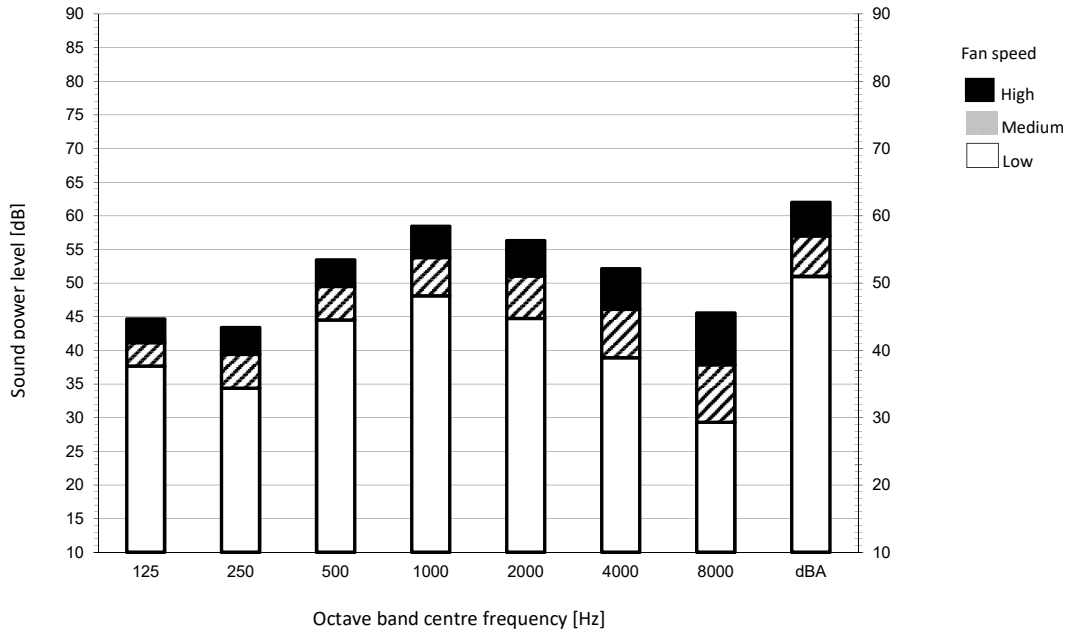
**3D090350C**

# 9 Sound data

## 9 - 1 Sound Power Spectrum

### FBA125-140A

Cooling mode



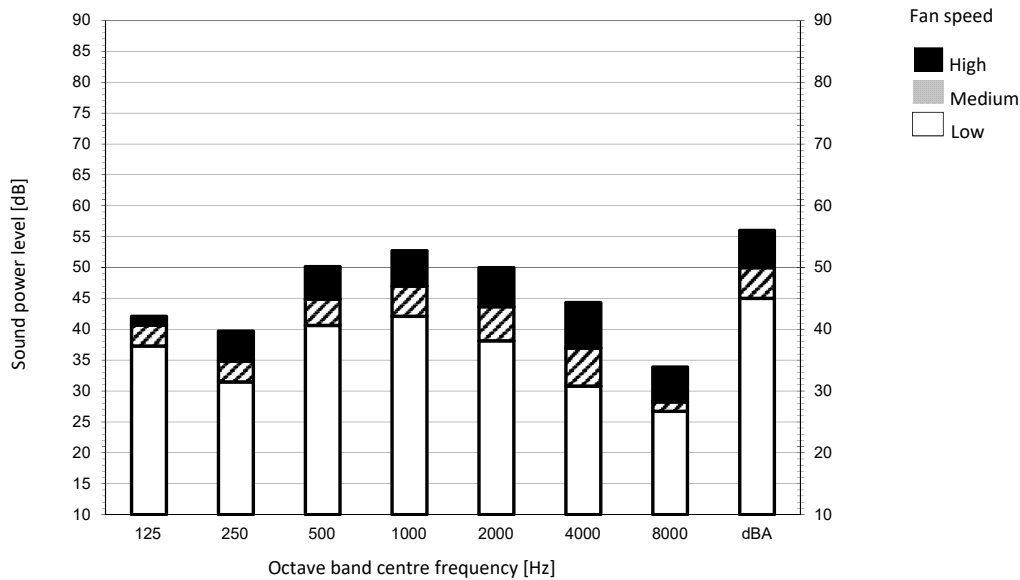
Notes

1. dBA = A-weighted sound power level (A scale according to IEC).
2. Reference acoustic intensity 0dB =  $\cdot 10E-6\mu W/m^2$ .
3. Measured according to ISO 3744

3D095589B

### FBA60-71A9

Cooling mode



Notes

1. dBA = A-weighted sound power level (A scale according to IEC).
2. Reference acoustic intensity 0dB =  $\cdot 10E-6\mu W/m^2$ .
3. Measured according to ISO 3744

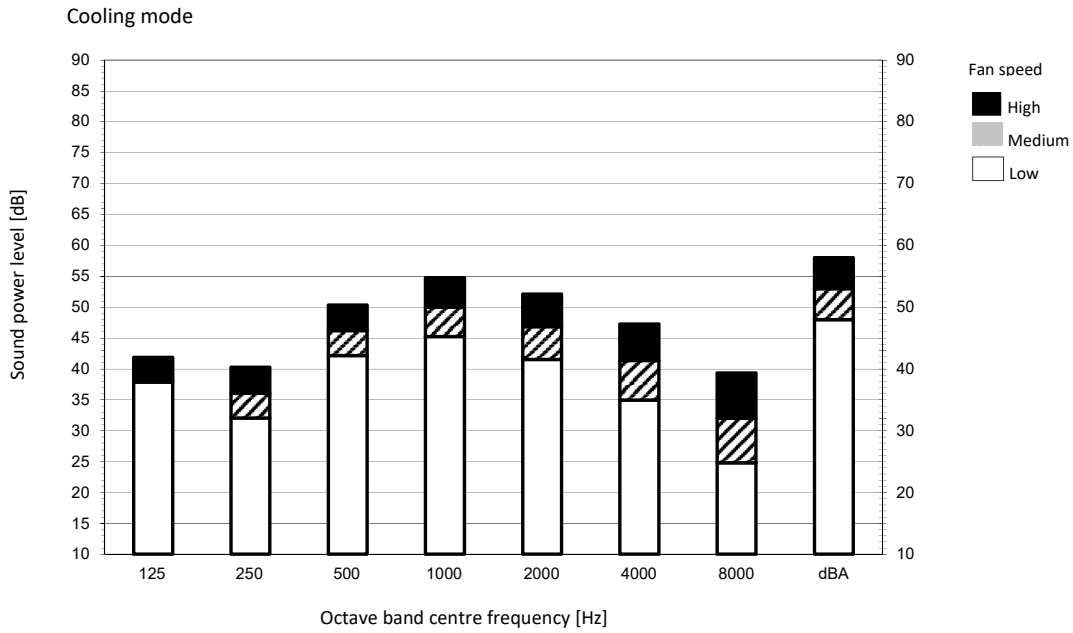
3D095587B

# 9 Sound data

## 9 - 1 Sound Power Spectrum

9

### FBA100A

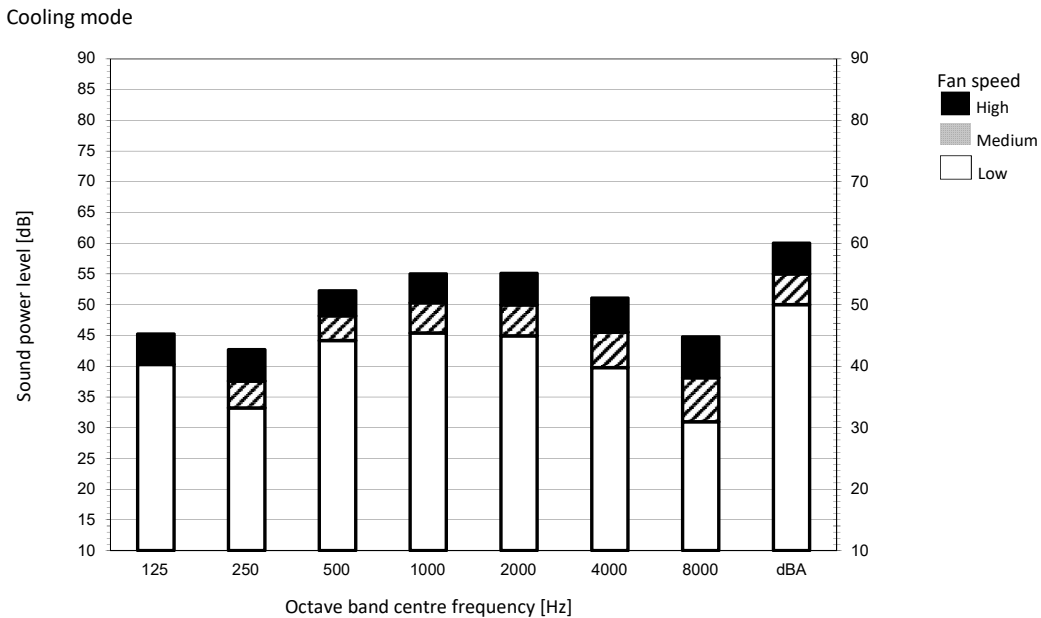


Notes

1. dBA = A-weighted sound power level (A scale according to IEC).
2. Reference acoustic intensity  $0\text{dB} = 10^{-6}\mu\text{W}/\text{m}^2$ .
3. Measured according to ISO 3744

3D095588B

### FBA35-50A9



Notes

1. dBA = A-weighted sound power level (A scale according to IEC).
2. Reference acoustic intensity  $0\text{dB} = 10^{-6}\mu\text{W}/\text{m}^2$ .
3. Measured according to ISO 3744

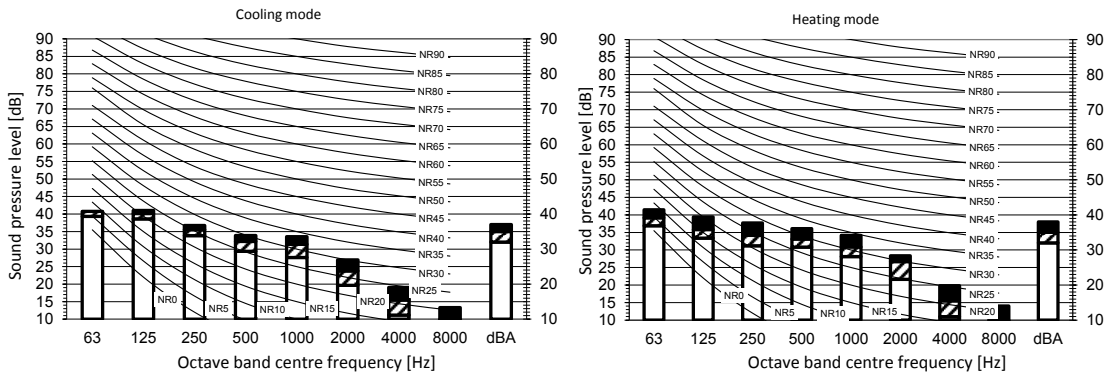
3D095586B



# 9 Sound data

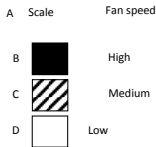
## 9 - 2 Sound Pressure Spectrum

### FBA140A



**Legend**

dBA = A-weighted sound pressure level (A scale according to IEC).

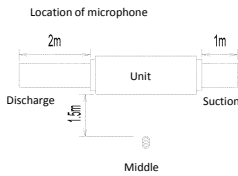


Cooling		Total dB			
A	B	C	D		
dBA	37	35	32		

Heating		Total dB			
A	B	C	D		
dBA	38	35	32		

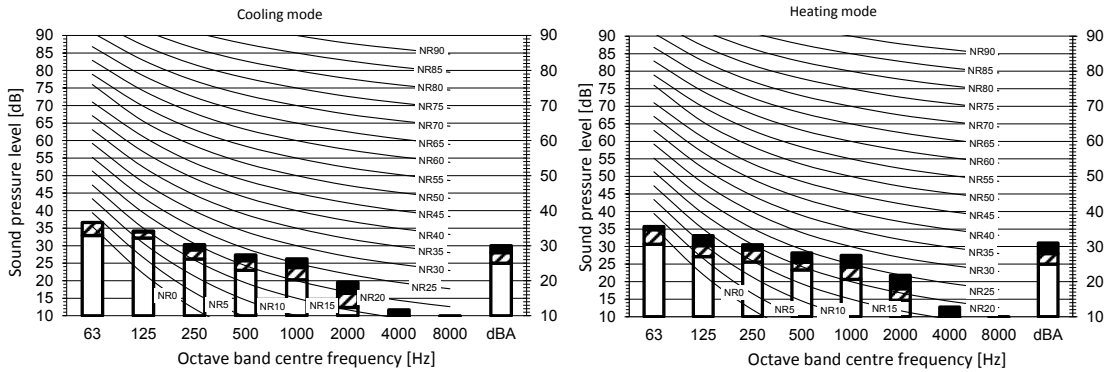
**Notes**

1. Operating conditions: power source 220-240 V/220 V 50/60 Hz; JIS standard
2. Background noise already taken into account.
3. Operating noise varies depending on operation and ambient conditions.
4. The operation noise measuring method is in accordance with JISC9612.
5. Measuring location: anechoic chamber



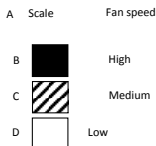
3D110172

### FBA60A9



**Legend**

dBA = A-weighted sound pressure level (A scale according to IEC).

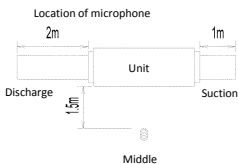


Cooling		Total dB			
A	B	C	D		
dBA	30	28	25		

Heating		Total dB			
A	B	C	D		
dBA	31	28	25		

**Notes**

1. Operating conditions: power source 220-240 V/220 V 50/60 Hz; JIS standard
2. Background noise already taken into account.
3. Operating noise varies depending on operation and ambient conditions.
4. The operation noise measuring method is in accordance with JISC9612.
5. Measuring location: anechoic chamber



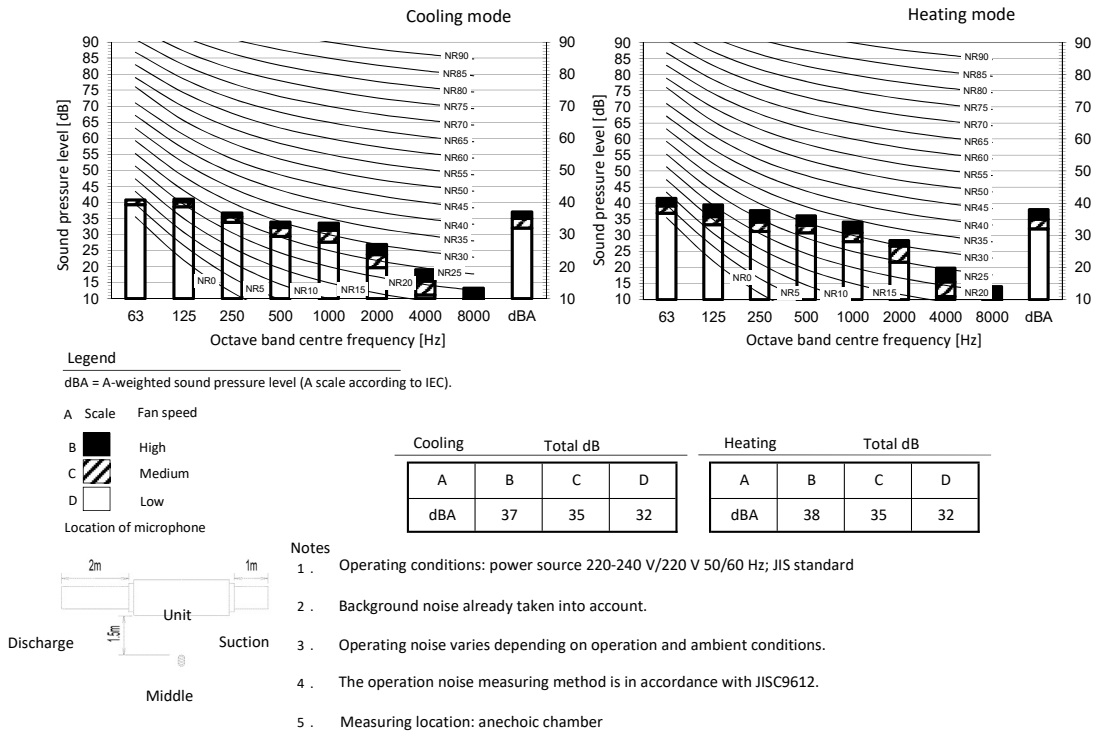
3D110168A

# 9 Sound data

## 9 - 2 Sound Pressure Spectrum

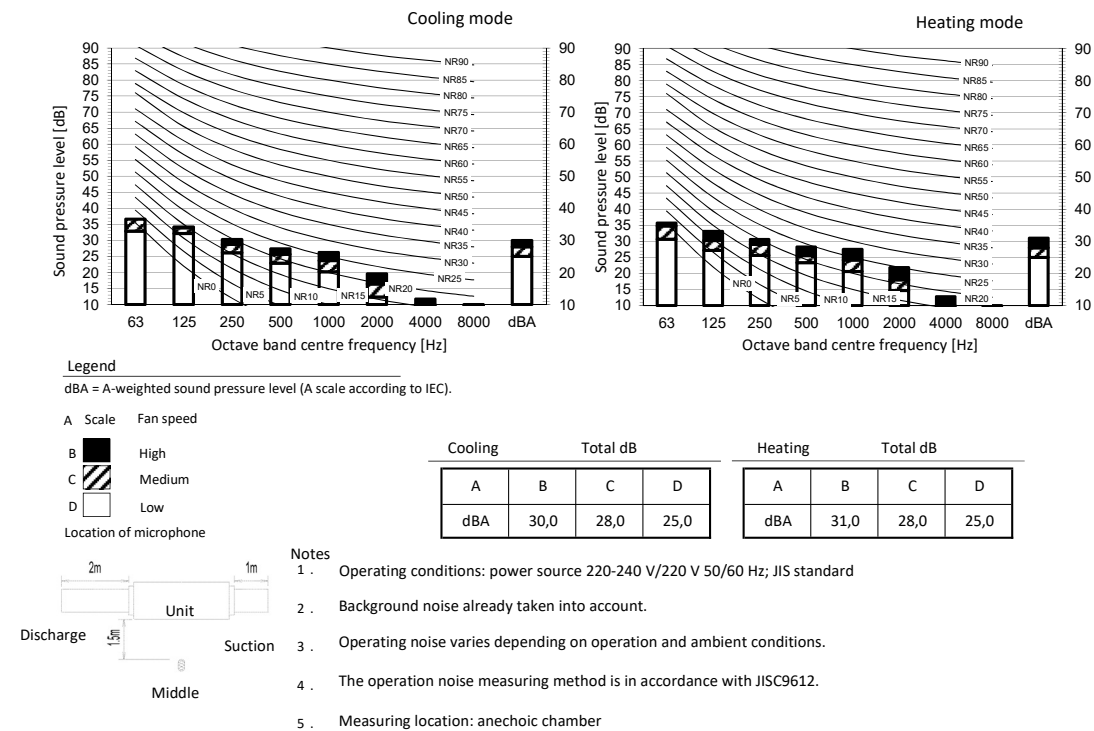
9

### FBA125A



3D110171A

### FBA71A9

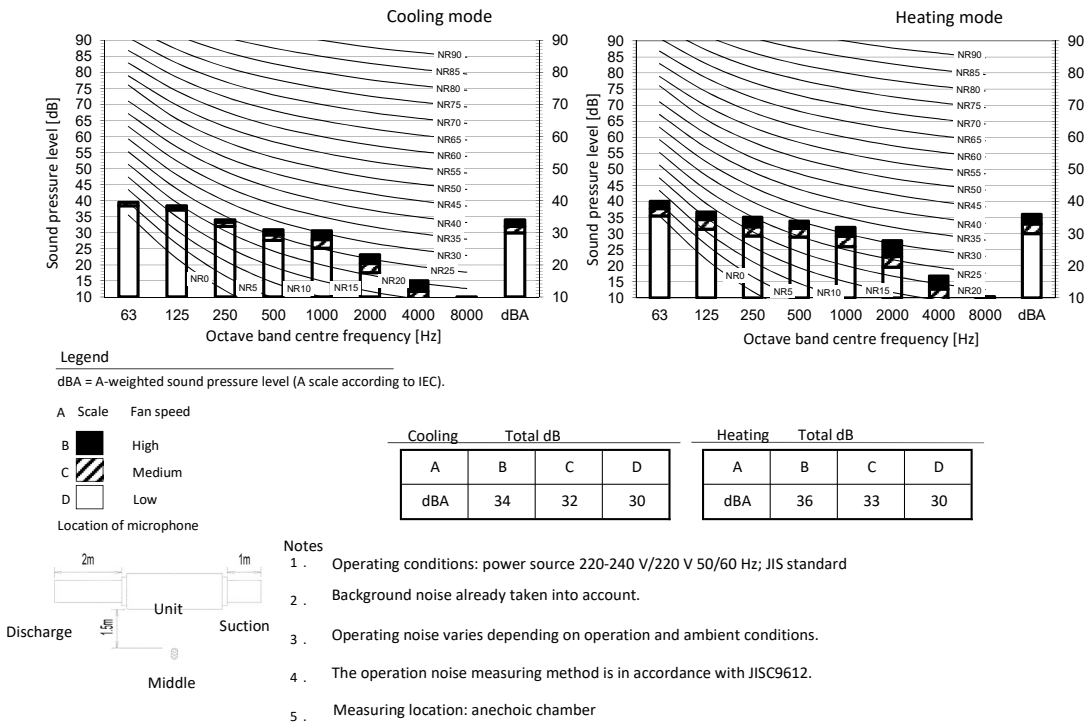


3D110169B

# 9 Sound data

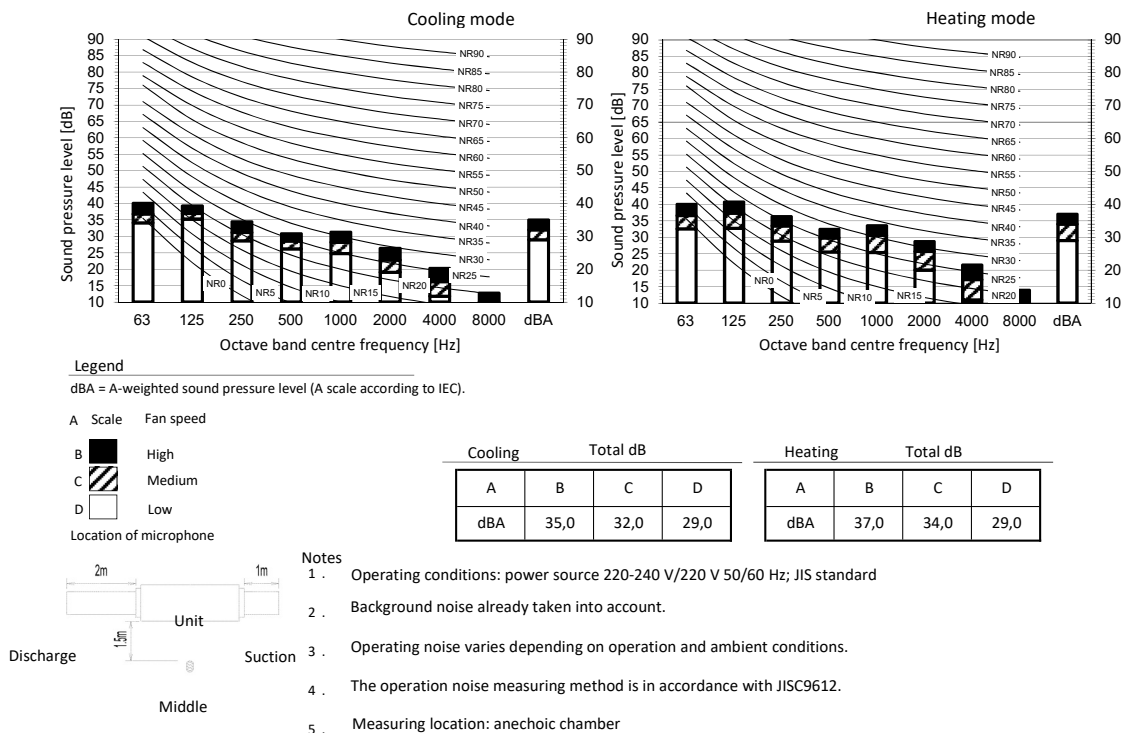
## 9 - 2 Sound Pressure Spectrum

### FBA100A



3D110170A

### FBA50A9



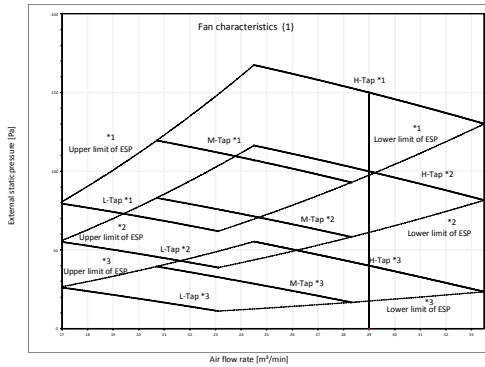
3D110167B

# 10 Fan characteristics

## 10 - 1 Fan Characteristics

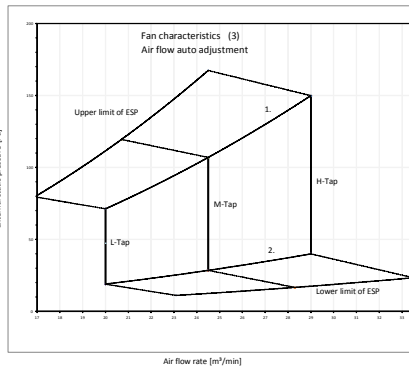
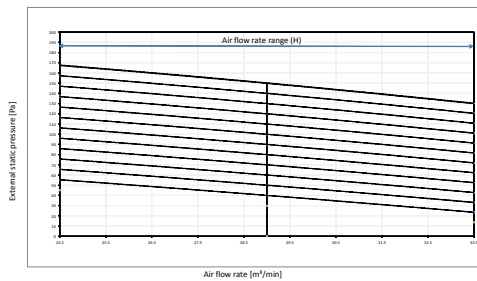
10

### FBA100A



Mark	ESP [Pa]
*1	150
*2	100
*3	40

Fan characteristics (2)  
Field setting with remote control



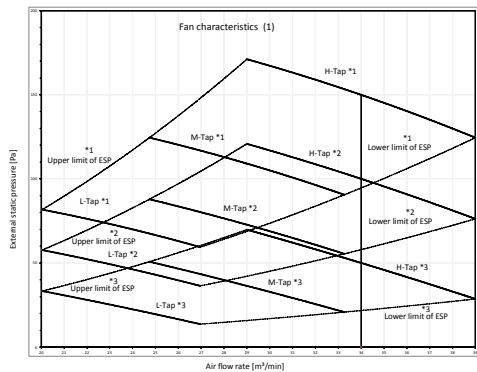
- 1. Upper limit of ESP by air flow auto adjustment
- 2. Lower limit of ESP by air flow auto adjustment

Notes:

- 1. Fan characteristics as shown are in "fan only" mode.
- 2. ESP: External static pressure.

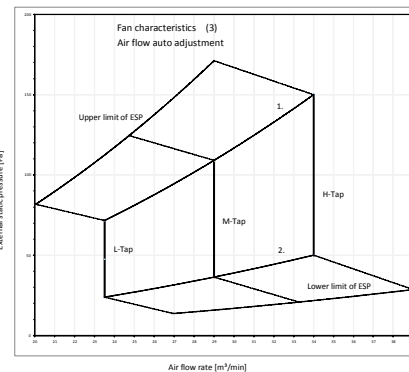
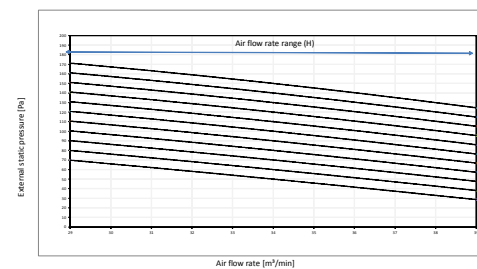
**3D095526B**

### FBA125-140A



Mark	ESP [Pa]
*1	150
*2	100
*3	40

Fan characteristics (2)  
Field setting with remote control



- 1. Upper limit of ESP by air flow auto adjustment
- 2. Lower limit of ESP by air flow auto adjustment

Notes:

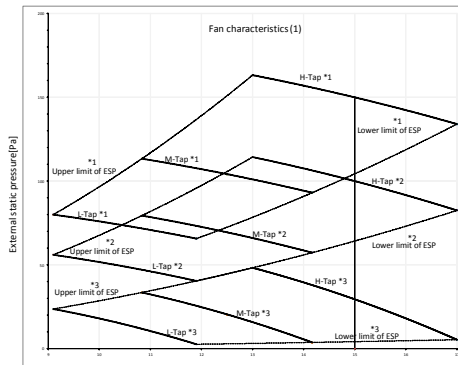
- 1. Fan characteristics as shown are in "fan only" mode.
- 2. ESP: External static pressure.

**3D095527B**

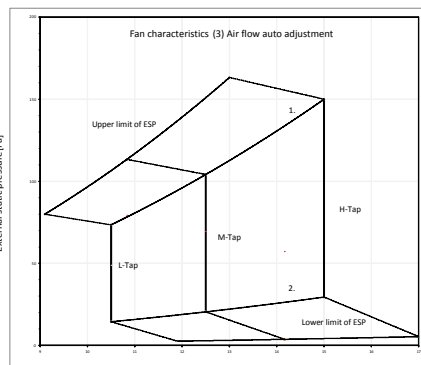
# 10 Fan characteristics

## 10 - 1 Fan Characteristics

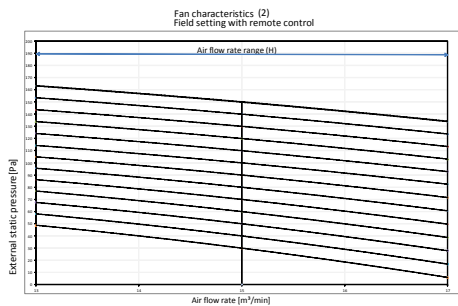
### FBA35-50A9



Mark	ESP (Pa)
*1	150
*2	100
*3	30



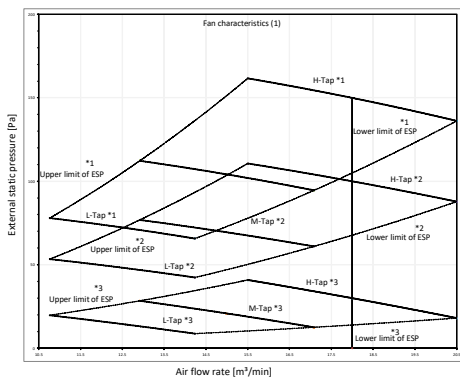
1. Upper limit of ESP by air flow auto adjustment
2. Lower limit of ESP by air flow auto adjustment



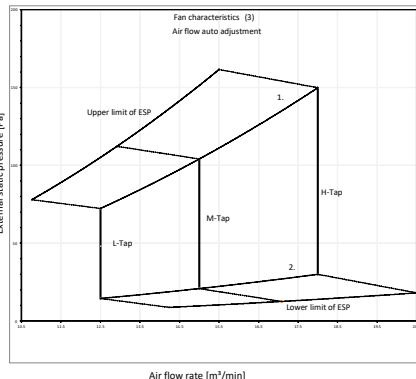
- Notes:
1. The fan characteristics shown are in "fan only" mode.
  2. ESP: External static pressure.

3D095521B

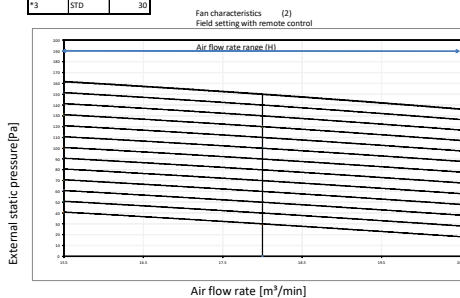
### FBA60-71A9



Mark	ESP (Pa)
*1	150
*2	100
*3	30



1. Upper limit of ESP by air flow auto adjustment
2. Lower limit of ESP by air flow auto adjustment



- Notes:
1. Fan characteristics as shown are in "fan only" mode.
  2. ESP: External static pressure.

3D095524B

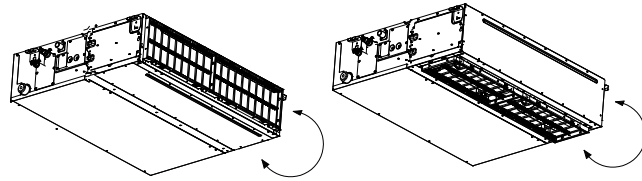
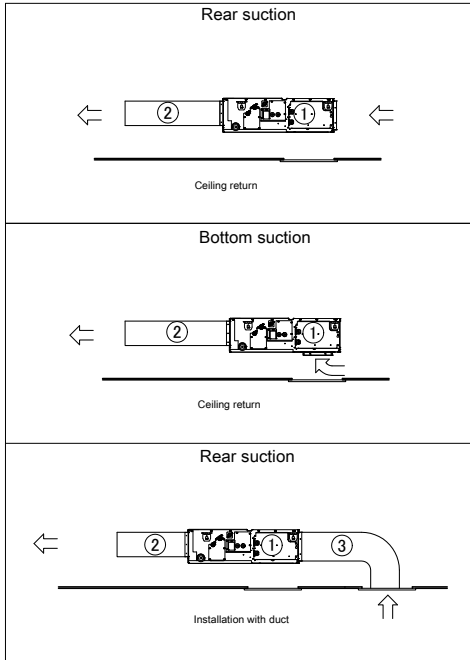
# 11 Installation

## 11 - 1 Installation Method

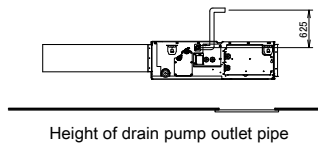
11

### FBA35-71A9 FBA100-140A

Installation methods



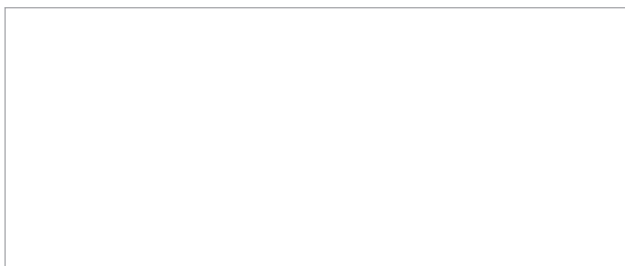
Easy modification from rear suction to bottom suction



Height of drain pump outlet pipe

Number	Description	
①	Indoor unit	
②	Air outlet duct	Field supply
③	Air inlet duct	Field supply

3D094912A



EEDEN20

05/2020



The present leaflet is drawn up by way of information only and does not constitute an offer binding upon Daikin Europe N.V. Daikin Europe N.V. has compiled the content of this leaflet to the best of its knowledge. No express or implied warranty is given for the completeness, accuracy, reliability or fitness for particular purpose of its content and the products and services presented therein. Specifications are subject to change without prior notice. Daikin Europe N.V. explicitly rejects any liability for any direct or indirect damage, in the broadest sense, arising from or related to the use and/or interpretation of this leaflet. All content is copyrighted by Daikin Europe N.V.